

NTHU Summer Program

Building a Sustainable Energy Future.

Program Schedule

July 14

July 25, 2025

(All dates are local Taiwan Time)

Program Description

The summer camp will delve deeper into the significance of energy futures in the context of globalization, while exploring Taiwan's future development and the challenges it faces.

Participants will also have the chance to create innovative business ideas in the energy and environmental sectors, contributing positively to the global environment and public health.

Aimed at equipping participants with the essential knowledge and skills to tackle complex sustainability issues, the camp will provide opportunities to engage in discussions on various sustainability topics with like-minded individuals from across the globe. Additionally, there will be Chinese language courses offered to help participants better understand the cultural and linguistic aspects related to the region, enhancing their overall experience.

Program Features



Gain insights into **global environmental issues** and the **evolution of energy systems**.



Foster a **sustainability-focused mindset** and **generate innovative business ideas** in the energy and environmental industries.



Show an understanding of how **energy systems play a crucial role in shaping sustainability**.



Capable of designing and developing **AI-driven IoT systems and devices**.



Taiwan provides an **immersive environment for learning Mandarin**, with **daily** opportunities to practice in real-life situations like shopping, traveling, and interacting with locals.

Course

* Please be aware that the course will be taught in English.

* all schedules are subject to reasonable change.



Topic 1: Development of Internet of Things and Smart Energy-Saving Systems

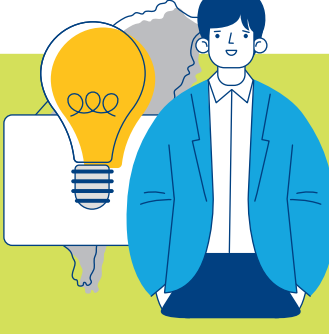
* Upon completing this course, you will earn 1 credit.

Professor

Dr. Bay-Yuan HSU

Content

These tutorial guides students through the steps of installing the operating system, setting up the system, and configuring the network. The goal is to provide students with a solid foundation for using Raspberry Pi, starting from the basics. Students will gain the ability to remotely control the device, transfer files through SSH connections, and develop essential skills needed for Raspberry Pi-based projects.



Topic 2: Navigating the expansion of social innovation in Taiwan

* Upon completing this course, you will earn 1 credit.

Professor

Dr. Ying-Che HSIEH
Dr. Li-Hsiang YI

Content

In this class, we will explore the development trajectory of social innovation in Taiwan and connect the SDGs with local social issues. Additionally, we will examine the essence of social entrepreneurship and discuss how business strategies can be applied to address societal challenges.



Topic : Mandarin Basic I

Professor

Dr. Sheng-Fang Fu

Content

The Mandarin Basic I class is a course that helps students build their language foundation within a short period of time so they can handle problems with daily life. (ex. Basic phonics, self-introduction, numbers, shopping, paying, ordering food, telling time, etc.)

	MON	TUE	WED	THU	FRI	SAT	SUN
Date	7/14	7/15	7/16	7/17	7/18	7/19	7/20
09:00-12:00	Arrival	Orientation	Topic 2	Topic 2	Topic 2	Culture Tour	
14:00-17:00		Topic 1	Company Visit	Topic 1	Mandarin Basic 1		
Date	7/21	7/22	7/23	7/24	7/25	7/26	
09:00-12:00	Mandarin Basic 1	Topic 2	Mandarin Basic 1	Topic 2	Topic 2	Home Sweet Home	
14:00-17:00	Topic 1	Topic 1	Company Visit	Topic 1	Topic 1		

* The **company visits** will be arranged based on the course plan, and the following companies will be included: TSMC 、MXIC 、TASA 、ITRI etc.

* The **farewell dinner** will be held on the evening of July 25th.

Fees

Applicants	Registration Fee	Program Fee	Total Fee	Application Period
Early Bird registration & payment	USD 150	USD 1350	USD 1500	Mar 3, 2025– Apr 1, 2025
Students from a partner university *List of Sister University	x	USD 1500	USD 1500	March 3, 2025 To May 7, 2025
NTHU students	x	USD 1500	USD 1500	
PRC students from a partner university *List of Sister University	USD 30 (for Taiwan Entry Permit Application)	USD 1500	USD 1530	
Students from a non-partner university	USD 150	USD 1500	USD 1650	
PRC students from a non-partner university	USD 150+ USD 30 (for Taiwan Entry Permit Application)	USD 1500	USD 1680	
Group Registration Group fees apply for registrations of two or more students.	USD 150 per student	USD 1350 per student	USD 1500 per student	

- The registration fee is non-refundable
- Program Fee includes: all courses and workshops, course materials, Welcome reception and Farwell evening, cultural and social activities, company visit, accommodation

*The list of partner schools can be checked on the OGA website.

<https://oga.site.nthu.edu.tw/p/412-1524-18677.php?Lang=zh-tw>

Eligibility

An applicant must be at least 20 years old
or
who is currently studying for a bachelor / master degree.

Application Period

March 3, 2025 to May 7, 2025

****For more details, please visit the OGA website.**

<https://oga.site.nthu.edu.tw/p/412-1524-17837.php?Lang=zh-tw>

